

byteLAKE

AI Solutions

Manufacturing, Automotive, Paper,
Chemical, and Energy sectors

Partnership with Intel

byteLAKE @ Intel

- **RRK / RFP Ready Kit**

- Storefront: <https://www.intel.com/content/www/us/en/partner/showcase/storefront/a5S3b0000002k8EEAQ/bytelake.html>
- Playbook: [Intel® IoT RFP Ready Kit Solutions Playbook](#) (Jan'23 edition, page 62)

- **AI in Production**

- <https://www.intel.com/content/www/us/en/internet-of-things/ai-in-production/partners/bytelake.html>

- **AI Builders**

- [Intel® AI Builders - Membership Partners](#) (search: byteLAKE)



Intel & byteLAKE publications

- **Intel AI**

<https://twitter.com/IntelAI/status/1590751152315854854?s=20&t=iKEyWR9qYB7cqXlm32QkWw>
(joint promotion of byteLAKE's CFD Suite)

- **Intel's newsroom**

<https://www.intel.com/content/www/us/en/newsroom/news/ai-helps-speed-papermaking-process-europe.html>
(Cognitive Services for Paper Industry)

➤ Follow-up article: <https://www.insight.tech/retail/paper-mills-press-on-with-ai-visual-inspection>

- **Intel Software / Inside AI People series**

<https://youtu.be/bUt9J7FMys>

- **Case Study**

<https://www.intel.com/content/www/us/en/data-center/idc-bytelake-case-study.html>

➤ Follow-up article: <https://www.insight.tech/industry/applying-industrial-ai-models-to-product-quality-inspection>



byte
LAKE



SUPPORT

DEVELOPERS

8

 ENGLISH

Contact byteLAKE



The diagram illustrates the 'Paper Mill 4.0 - end to end solution'. It shows a production line starting with 'On-line die film' and 'On-line die film' being processed by a 'Paper Mill' (represented by a large roll of paper). The output is then processed by a 'Web Line Detector' (represented by a camera and sensor unit). The detector is connected to a 'Web Line Detector' (represented by a computer monitor) which displays a 'Trigger line data' screen. The data is then processed by a 'Web Line Detector' (represented by a computer monitor) which displays a 'Trigger line data' screen. The final output is 'Inquiries with paper mill system'.

AI-accelerated CFD Simulations
General concept of the acceleration

• **Traditional workflow**

Workflow: CFD: Reynolds-Navier-Stokes, Nav. solver → (slowly) results

• **CFD Suite**

Workflow: CFD Suite (reduced + AI) → Traditional, AI workflow → results

CFD Suite
Collection of software tools for the complete CFD workflow from pre- to post-processor

byteLAKE's CFD Suite (AI-accelerated CFD)

Products optimized for Intel technologies



← → ↻ 🔒 intel.com/content/www/us/en/internet-of-things/ai-in-production/partners/bytelake.html

intel

PRODUCTS

SUPPORT

SOLUTIONS

DEVELOPERS

PARTNERS



USA (ENGLISH)



Search Intel.com

byteLAKE

byteLAKE

Software Provider

ABOUT THIS PARTNER AND PRODUCT

- Products: byteLAKE's Cognitive Services*, byteLAKE's CFD Suite* (AI-accelerated CFD)
- Industry: All
- Targeted Geographies: North America, Europe, South America, Asia Pacific and Japan, Middle East and Africa
- Use Case: All



byteLAKE is an AI & HPC software company developing AI-powered solutions for enterprises. The company offers both products and services, enabling innovative, AI-powered automation and data-driven, proactive operations across various industries i.e. AI-assisted Visual Inspection and Big Data analytics for manufacturing, AI-accelerated Computational Fluid Dynamics, AI for Industry 4.0, workflow and document processing automation etc.

byteLAKE's Cognitive Services* is a collection of AI models designed to address Industry 4.0 needs. Each AI model has been designed and trained to be razor-focused on specific industry tasks., ensuring maximum accuracy

Key features include:

- **AI-assisted visual inspection** for efficient quality or quantity of products monitoring as well as industrial process monitoring.
- **AI-powered Big Data / IoT sensors data analytics** to find trends, enable predictive maintenance, and answer questions like why something happens, what will likely happen, or to find the collective meaning of the data acquired through various sources.

Note: byteLAKE's Cognitive Services is also available as a special customization for Paper Mills.

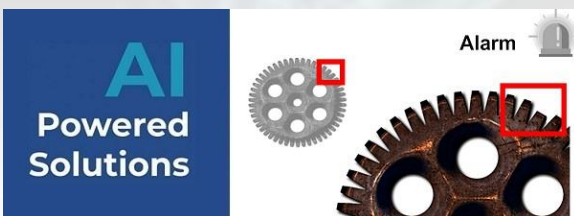
Wet Line Detector for Paper Mills automates detection and measurements of the so-called wet line. This module helps reduce costs, expedite visual inspection and avoid unplanned downtime in paper production. Available as a complete end-to-end solution, including edge components (hardware computing units, cameras), software license, integration services or guidelines as well as post-deployment customer care.

byteLAKE's AI Products



Cognitive Services

Advanced quality inspection and data insights.



for Manufacturing



for Automotive



for Paper Industry

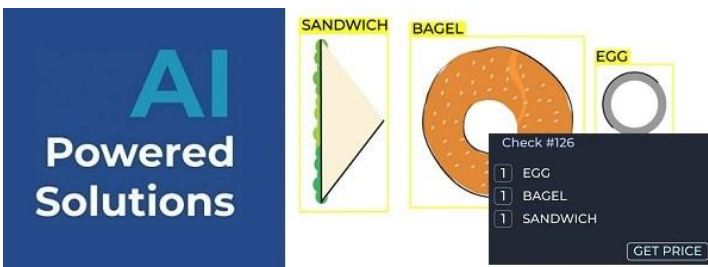
Predictive Maintenance



Data Insights

Cognitive Services for Restaurants

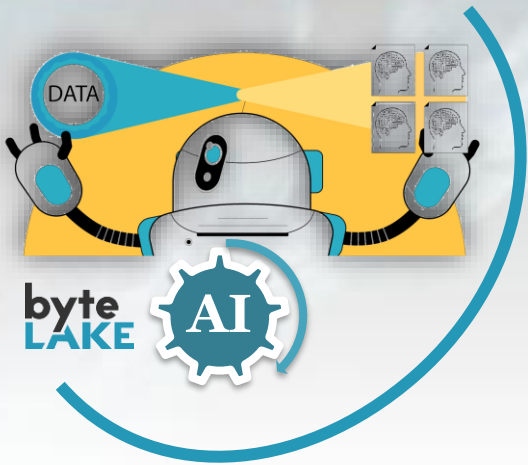
Self-checkout and object recognition.



CFD Suite

AI-accelerated Computational Fluid Dynamics.

Performance & Scalability



Maximum
Performance

Edge AI



Up to 25x faster

Always optimized for the latest hardware available.

(*) Performance enhancement achieved through the optimization of byteLAKE's Cognitive Services with Intel® OpenVINO™, Intel® DL Boost Vector Neural Network Instructions (VNNI), and others.

*Performance benchmark (Intel® CPUs & GPUs 2024):
(soon)*

*Performance benchmark (Intel® CPUs, 2024):
bytelake.com/en/download/4395/*

*OpenVINO™ benchmark:
bytelake.com/en/download/4067/*

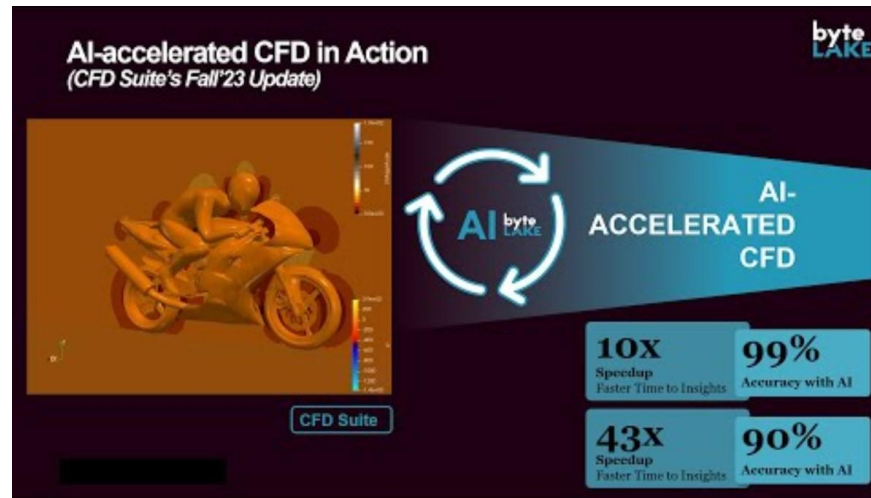
*AI Training Performance on Intel's® latest CPUs, GPUs
(soon)*

*Scalability report, latest CPUs and GPUs (2024):
(soon)*

*AI Training Performance on Edge Server:
bytelake.com/en/download/4018/*

*Scalability report (2021):
bytelake.com/en/download/4013/*

AI-
accelerated
CFD



Watch on YouTube: youtu.be/X8OKIPnj8vc

Contact us to learn more!

Marcin Rojek

**byte
LAKE**



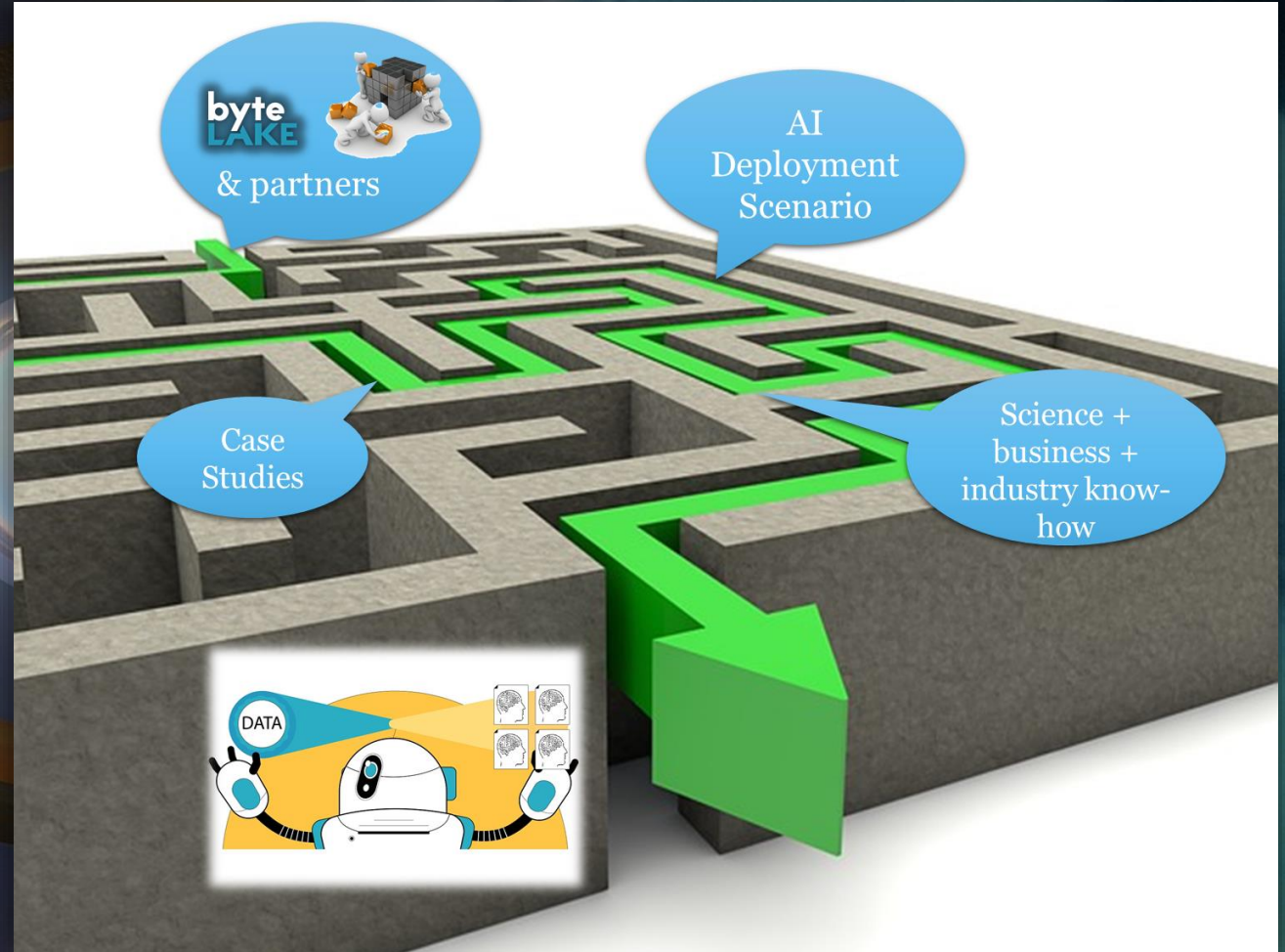
mrojek@byteLAKE.com
+8 508 091 885

Mariusz Kolanko

**byte
LAKE**



mkolanko@byteLAKE.com
+48 505 322 282



Meet byteLAKE

AI Solutions for Industries |
Quality Inspection |
Data Insights |
Predictive Maintenance |
AI-accelerated CFD |
Self-Checkout

Empowering Industries with Artificial Intelligence Solutions.

At byteLAKE, we harness cutting-edge technology to provide advanced quality inspection and data insights tailored for the Manufacturing, Automotive, Paper, Chemical, and Energy sectors.

Additionally, we offer self-checkout stations for Restaurants and object recognition solutions for Retail businesses.

www.byteLAKE.com

byte
LAKE

Headquartered in Poland

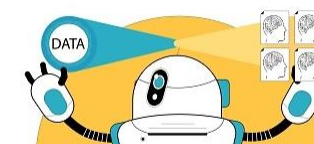


+48 508 091 885
+48 505 322 282
welcome@byteLAKE.com

Products:



CFD Suite



Cognitive Services

Partners & Clients

byte
LAKE

intel

intel
partner
Gold
IoT Solutions

"AI already plays a very important role in our daily lives. [...] The application of the Intel® Distribution of OpenVINO™ toolkit in byteLAKE's Cognitive Services shows that AI works efficiently as an actual tool for optimizing company operations. Moreover, such a combination reduces the barrier of necessary upgrades to IT infrastructure [...]," said Krzysztof Jonak, EMEA Territory Sales Director, Intel.

intel
RFP
READY

Tridiagonal®
Solutions
compute | innovate | develop

- [LinkedIn.com/company/byteLAKE](https://www.linkedin.com/company/byteLAKE)
- [X.com/byteLAKEGlobal](https://twitter.com/byteLAKEGlobal)
- [FB.com/byteLAKE/](https://www.facebook.com/byteLAKE/)
- byteLAKE.com/en/YouTube
- [Blog](#)



Microsoft
Partner

AB
INNOVATION
DESIGNER
AB GROUP

mondi

MixIT
The Enterprise Mixing Analysis Tool

NVIDIA
INCEPTION PROGRAM

SIMPRA

JME

Bpower2



Nicholas Borsotto Machado Monteiro • 1st
WW AI Business Lead & Head of Lenovo AI Innovators // Co-founder of M...

Professionally and personally I couldn't have asked for better partners than [Marcin Rojek](#), [Mariusz Kolanko](#) and team. Thank you for being with us from the start and allowing us to be your partner for scale. Looking forward to everything that will out next.

Lenovo
AI Innovators
Partner Ecosystem

"We're also **working** with a number of partners on AI initiatives that will provide real world solutions for customers. [...] Our **collaboration** with partners such as Intel, NVIDIA, Mark III systems, and **byteLAKE** greatly expands the resources and expertise we're able to provide", said Dr. Bhushan Desam, Lenovo's AI Global Business Leader, HPC and AI Business.

"Automation and optimization of various business processes are crucial and very high on our agenda when planning future roadmap for Bpower2. We see Artificial Intelligence as the key enabler to achieve such goals. **Being impressed by byteLAKE's achievements and innovativeness in the AI space**, we are very happy to welcome them as our partners who will design and deliver AI-based microservices for Bpower2," said Jacek Rakoczy, Bpower2's CEO.



"byteLAKE saw the potential to make CFD analysis even faster and more easily accessible leveraging the flexibility and superior parallelism of Alveo accelerator cards," said Viraj Paropkari, senior manager, Data Center Marketing, Xilinx. "Our teams worked together to create finely tuned kernels for Alveo accelerators that are ready to deploy on-premise or in the cloud."

More at: byteLAKE.com